



RED RIVER COLLEGE

WHAT WE'RE DOING IS WORKING.

Lauren Waples  
Manager Academic Quality & RPL

# Recognition of Prior Learning (RPL) at RRC

## Presentation Outcomes

- Describe RPL at Red River College
- Identify the policy that informs RPL practice at RRC
- Identify who is involved in RPL at RRC
- Locate RPL Resources at RRC

# Recognition of Prior Learning (RPL) at RRC

## **What is RPL at RRC?**

# Recognition of Prior Learning (RPL) at RRC

**Formal Learning**

**Non-formal Learning**

**Informal Learning**

# Recognition of Prior Learning (RPL) at RRC

**What policy informs RPL  
practice at RRC?**

**[www.rrc.ca/policies](http://www.rrc.ca/policies)**

**[https://www.rrc.ca/legal/policies/  
recognition-of-prior-learning/](https://www.rrc.ca/legal/policies/recognition-of-prior-learning/)**

# Recognition of Prior Learning (RPL) at RRC



**RED RIVER COLLEGE**  
OF APPLIED ARTS, SCIENCE AND TECHNOLOGY

A14

## **Policies and Procedures      Recognition of Prior Learning (RPL) Including Transfer of Credit**

Originator: Office of RPL Services and Office of Director, Student Life and Registrar  
Approver: Senior Academic Committee  
Effective: April 13, 2018  
Replaces: Policy A14 – Recognition of Prior Learning (RPL) (Revised June 2009)  
Policy A15 – Transfers between RRCC Programs (Revised August, 1996)  
Policy A16 – Transfer of Credits to RRCC Programs from other Post-Secondary Institutions (Revised August 1996)  
Policy A17 – Assessment of External Courses from Non-Post Secondary Institutions for College Credit (Revised January 27, 1998)

### **1. Preamble**

Recognition of Prior Learning (RPL) is a process that involves the identification, documentation, assessment and recognition of formal, (specifically transfer credit), informal and non-formal learning acquired through education, work and life experience.

The College's RPL services and system are coordinated and provided by the RPL Facilitator, RPL Advisor(s), Director for Student Life and Registrar, International Credential and Transfer Credit Officer, RPL assessors, the RPL Committee of cross-college representatives and designates from academic and support departments, and administration. The RPL system development and implementation is described in the Red River College RPL Strategic Plan and is integrated with the College's Strategic Plan.

To ensure the fairness and reliability of the RPL practices and process, the RPL processes at Red River College will follow the nine Guiding Principles for Quality RPL Practice in Canada as set forth by the Canadian Association of Prior Learning Assessment (CAPLA) and other emerging best practices.

### **2. Policy and Principles**

Red River College (RRC) wishes to provide opportunities for students to get recognition for prior learning, and to enhance mobility between post-secondary institutions and between RRC programs. RRC wishes to ensure RPL is handled in a transparent manner.

Red River College will evaluate and grant credit to students for qualifying previous formal, informal and non-formal learning that is equivalent to College courses or programs. Recognized prior learning will be applied toward the requirements of College programs.

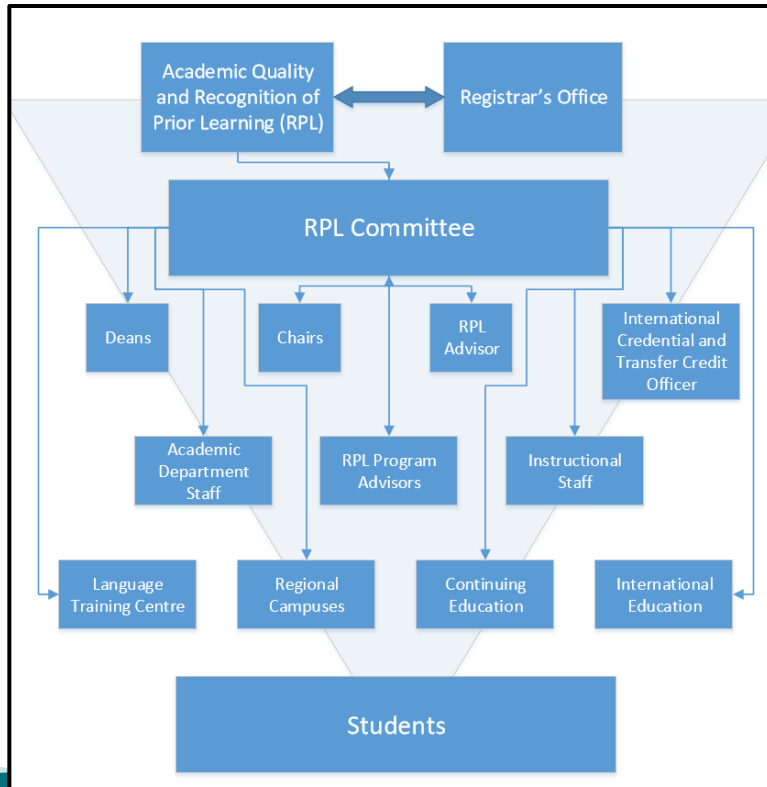
Page 1 of 8



# Recognition of Prior Learning (RPL) at RRC

## **Who is involved in RPL at RRC?**

# Recognition of Prior Learning (RPL) at RRC





# Recognition of Prior Learning (RPL) at RRC

## **Where are the RPL Resources at RRC?**

# Recognition of Prior Learning (RPL) at RRC

**RPL Resources**

For Staff & Faculty

Contact RPL Services

RPL FAQ

RPL Forms and Fees

RPL Resource Guides

Portfolio Development

Policies

Reports

N-APPL

Assessment of External Courses

RPL Strategic Plan

Professional Development

Professional Networks

Research

**RPL for Students**

Student Orientation

Access RPL Information

Process

Contact the RPL Advisor

[AIR Home](#) / [RPL Resources](#) / [Home](#)

## Recognition of Prior Learning

At RRC, **Recognition of Prior Learning (RPL)** is a process in which individuals have the opportunity to obtain credit for college-level knowledge and skills gained through work and life and/or through other educational programs.

RPL FAQ

RPL Process

RPL Resource Guides

Professional Development

Access RPL Information

RPL/Canadian Armed Forces

<http://air.rrc.ca/RPL>

WHAT WE'RE DOING IS WORKING.

# Recognition of Prior Learning (RPL) at RRC

# Thank you!

Lauren Waples  
lwaples@rrc.ca