



# **Celebrate With Us!**

MPLAN 20<sup>th</sup> Anniversary

1995 to 2015

---



# *Celebrate With Us!*

**Thursday, May 21, 2015**

**3:00 to 6:00 p.m.**

**Tamarack Room,  
Qualico Family Centre,  
Assiniboine Park**

**3:00 to 3:30: Annual General Meeting**

**3:45 to 4:15: Presentation – MPLAN  
History, 20th Anniversary Commemoration**

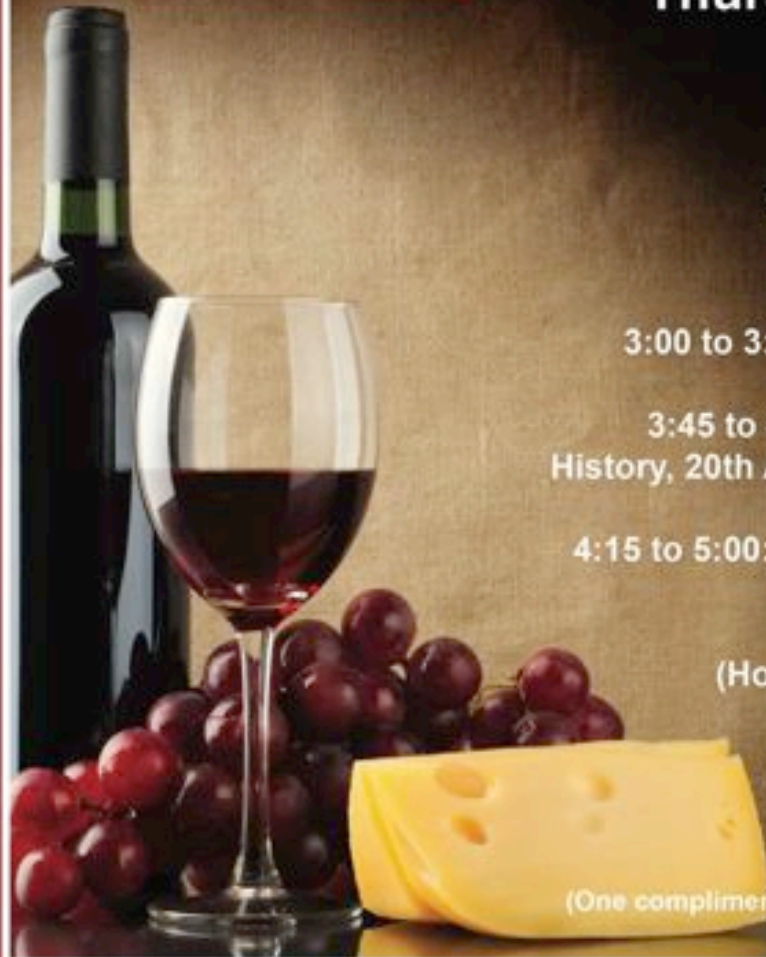
**4:15 to 5:00: PEARL/ExemPLAR Awards**

**5:00 to 6:00: Networking  
(Hors d'oeuvres, wine, cash bar)**

**\$50.00 for members**

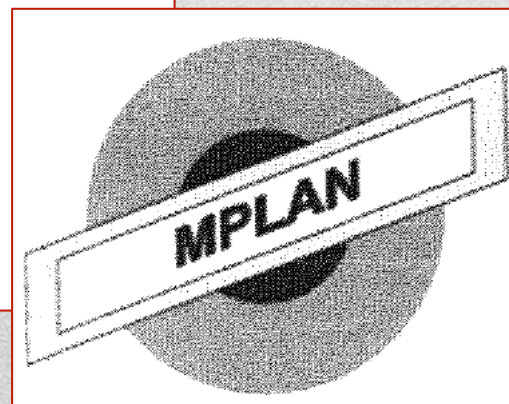
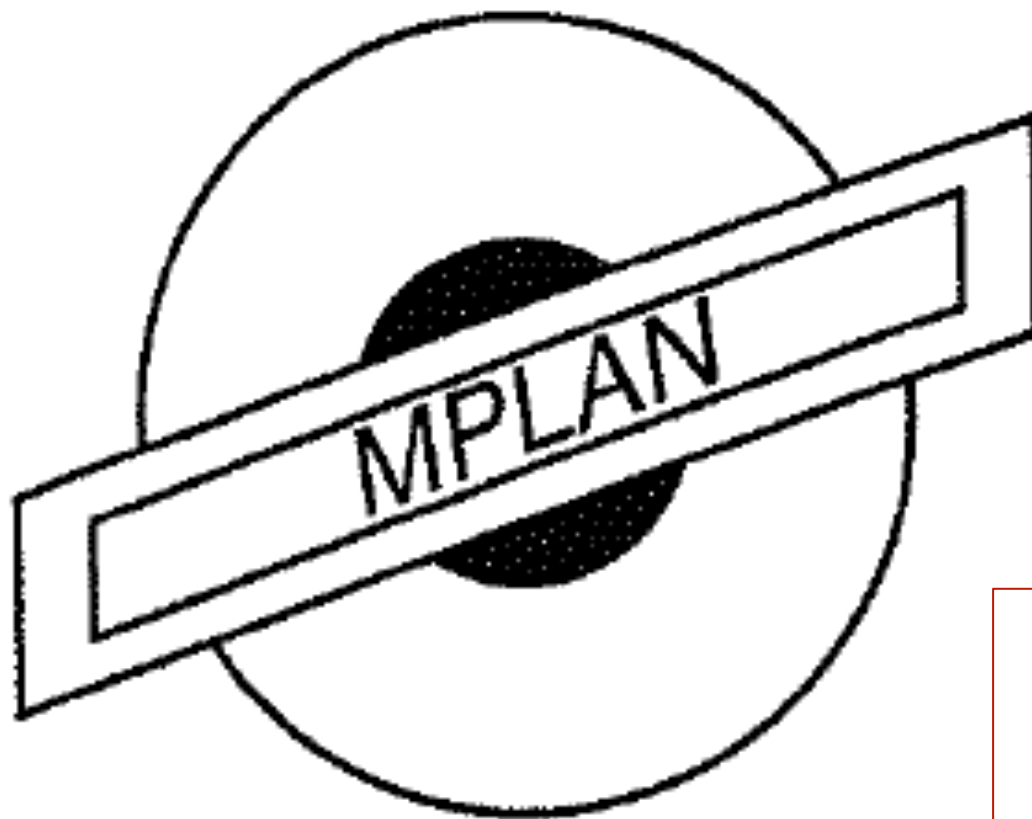
**\$60.00 for non-members**

**(One complimentary beverage ticket per registration)**



**RSVP on MPLAN's website: [www.mbplar.ca](http://www.mbplar.ca)**







**Manitoba Prior Learning Assessment Network**

---



# **PLAR Training 1998**

---





# **MPLAN PEARL Awards 2003**

---

# MPLAN is 10!

*Don't miss our special event!*

*Join us for MPLAN's 10<sup>th</sup> Anniversary Celebration,  
AGM and special presentation*

*on*  
[ePortfolios](#) ~ The new Management of Learning  
*with*

*Dr. Kathryn Chang Barker,  
Chair [LIfIA](#) ([www.lifia.ca](http://www.lifia.ca))  
President [FuturEd](#) ([www.futured.com](http://www.futured.com))*

*on*  
*Monday, June 6, 2005*

*Red River College's new Princess Street Campus  
160 Princess Street in the historic Exchange District*

**2005**





left to right -- Barb Read & Louesa Polyzoi(U of W); Darlene Cullimore & Shannon MacFarlane(McLeod & Boeing);Robin Millar (CEW)

## **2005 PEARL Awards**

---





**Ken  
Bellemare  
Event 2005**



#### How often do we meet?

MPLAN has an active program planning committee that generally coordinates five meetings a year. They include 2-3 workshops a year, topical presentations by Canadian keynote speakers and other networking events which promote fellow members from across the province to showcase their projects and programs.

#### PEARL Award

This award is given for Excellence in PLAR in Manitoba. The award(s) is given to an organization, program or project and is handed out at our Annual General Meeting typically held in May. Nominations are open to all areas of PLAR practice including workplace, industry, community, education and government. Past recipients include the College of Midwives, British Aerospace and Manitoba Child Care Program.



PEARL – Pursuit of Excellence in the Assessment and Recognition of Learning



#### What is PLAR and why is it important?

Prior Learning Assessment and Recognition (PLAR) is a process that involves the identification, documentation, assessment and recognition of learning acquired through formal and informal study.

#### How can PLAR benefit an individual?

- By reducing tuition costs...
- By reducing training time...
- By identifying your training needs.
- By recognizing the learning you already have...

#### How can PLAR benefit an employer?

- By reducing time away from work...
- By linking skill development needs to company needs
- It may reduce training costs

Manitoba Prior Learning Assessment Network  
PO Box 2583  
Sturton-Muir, Winnipeg, MB  
R3C 4B3  
[www.mplan.ca](http://www.mplan.ca)



## Manitoba Prior Learning Assessment Network

**MPLAN**

SKILL  
SUPPORT  
NETWORKING  
RECOGNITION

# MPLAN Brochure 2006





"MPLAN showed me how to help adult learners get the recognition they deserve."



#### Who We Are

- Manitoba Prior Learning Assessment Network
- Formed in 1995 MPLAN is a network of individuals, educators, business, industry, government and community organizations.



#### What We Do

MPLAN acts as a network and resource for PLAR practitioners by providing professional development experiences. MPLAN supports and promotes the recognition of PLAR in a variety of settings. We monitor provincial education and training trends and policies, assist in the development of provincial strategy and respond to issues that may impact the Recognition of Prior Learning. MPLAN also advocates for quality PLAR practices, provides consultations regarding Provincial and National PLAR strategies and supports research relevant to PLAR.



#### How To Join

MPLAN membership is open to individuals and organizations in Manitoba or elsewhere. Membership entitles individuals to attend MPLAN conferences and other learning events at reduced cost as well as ongoing networking. Annual membership runs from June 1 to May 31 of each year. Memberships submitted after December 1 of each year are charged at 50% of annual fee.

For further information, contact us at [info@mplan.ca](mailto:info@mplan.ca)

**MPLAN**



"MPLAN provides me with the opportunity to network and continue to grow in my profession."

# MPLAN Brochure 2006



Accepting the 2006 PEARL Awards on behalf of the recipient programs (left to right)  
(back row) Marcia Friesen, Eileen May & Stacey Thorarinson-Hoff  
(front row) Joan McKinley, Ann Pedersen, Karen Gander & Lynn Campbell







MPLAN Out and About  
Ann Pedersen & Shannon  
MacFarlane at the ITN  
Conference, June 2006.







**2006**





## Unpacking the Process Model for Qualifications Recognition Qualification Recognition Systems for Immigrants.

Presented by: Ximena  
Munoz, Director of  
Settlement & Labour



## A Festive Celebration: Pizza and Networking Lunch

Overview of presentations at November  
CAPLA Conference by several delegates  
from Manitoba

[www.RecognitionForLearning.ca](http://www.RecognitionForLearning.ca)

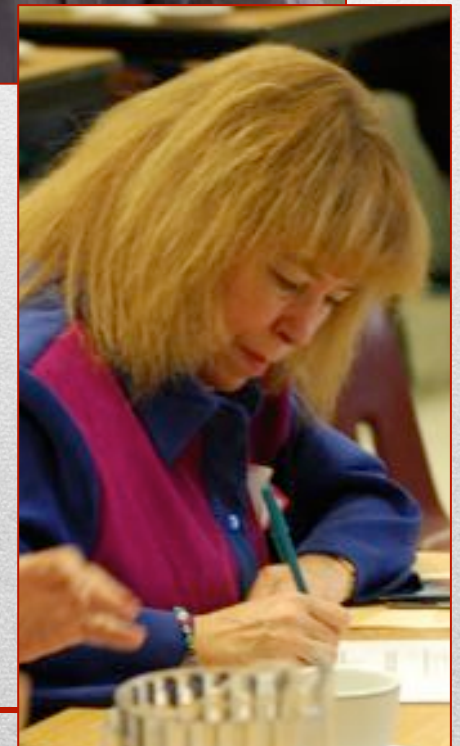
Presented by: Gail Hall, Coordinator of Recognition for  
Learning  
Gail Hall explained how to be actively involved in the  
new [www.RecognitionForLearning.ca](http://www.RecognitionForLearning.ca) website and the



Paula Angus at WTC,  
Sept. 28, 2006.

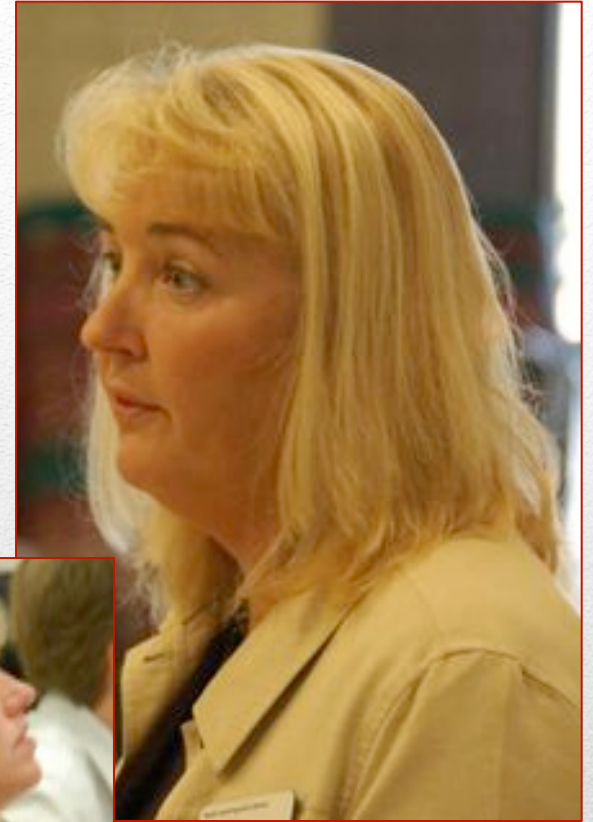
# 2006

---



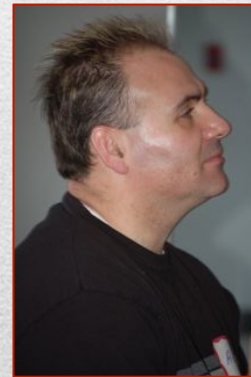
**September 2006**





**September 2006**

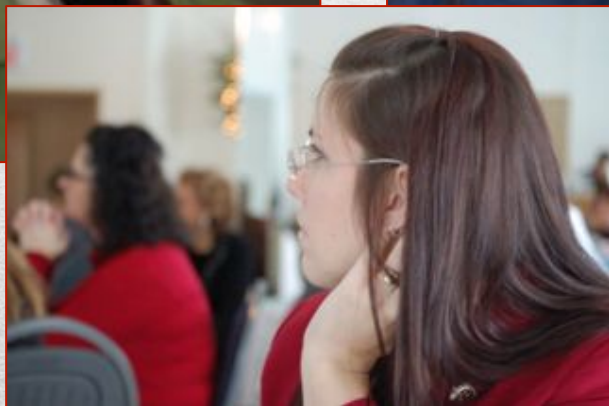
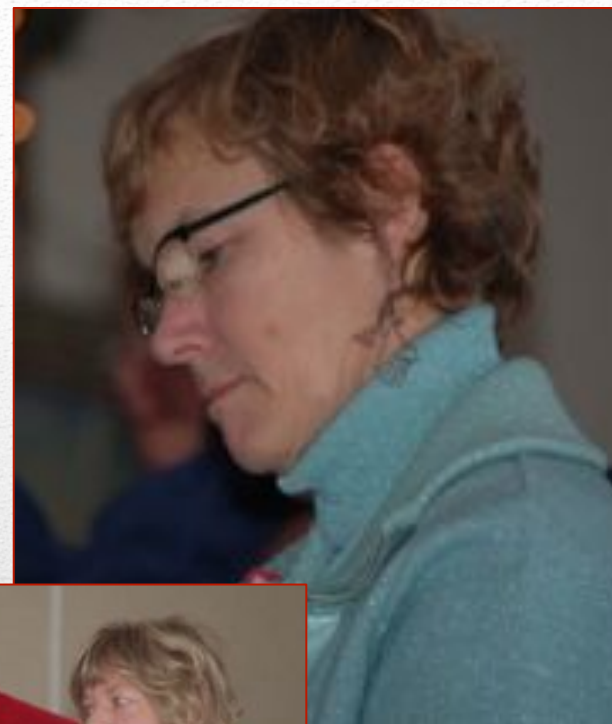
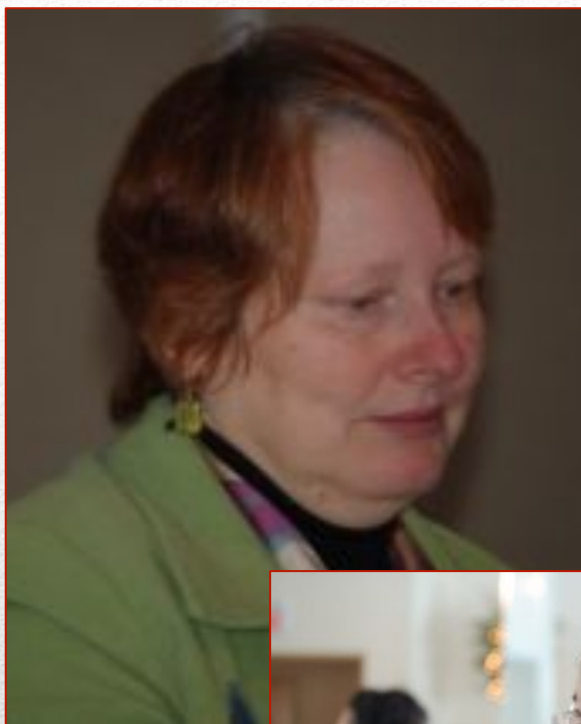




## **Highlights of the CAPLA Conference December 2006 at the Gates on Roblin**

---





## **Highlights of the CAPLA Conference December 2006 at the Gates on Roblin**

---



# Manitoba Prior Learning Assessment Network

Connecting learning communities through the recognition of prior learning

Home

About MPLAN

MPLAN Board

Membership

News

PEARL Award

PLAR Directory

Resources

Links

Contact Us

## News

---

### MPLAN presents Trade Essentials Workshop

Date: January 21, 2010, 8:30 am - 4:00 pm

Location: Canad Inns Polo Park  
1405 St. Matthews Ave

Description: MPLAN is pleased to present a one day Trade Essentials Workshop on Thursday, January 21, 2010.

In partnership with the Apprenticeship Section of the PEI Department of Innovation and Advanced Learning, we are pleased to host a one

# MPLAN Website

---





# Winter 2007

---



*From left to right: Mary Jane Fisher, Phil McBurney, Traicy Robertson, Shannon MacFarlane, Sherry Sullivan, Carol Hawkins, Don Presant, Lynn Cooper, Amy Campbell, Lauren Waples.*

## **Board 2007**

---





Ron Krishna's wife Aline and daughter Natalie accept the award on Ron's behalf.

# PEARL 2007

---



# **The Power of PLAR!**

## **Conference May 2007**

---





**CAPLA Fall Focus Workshop in Toronto, 2007**

---



**MPLAN Christmas Luncheon December 2007**

---





From L to R: Tracy Robertson, Ruth Gregory, Rae-Lynn Rempel,  
Don Pesant, Carol Hawkins, Phil McBurney, Lois Morin,  
Lauren Waples, Sylvia Provenski

## Board 2008

---



**AGM 2008**



Then the 2008 PEARL Awards were announced for five deserving recipients:

**Faculty of Agriculture and Food Sciences,  
University of Manitoba**

"Internationally Educated Agrologists Pilot Program"

**Adult Language Training Branch, Manitoba  
Labour and Immigration**

"Innovative Adult English as an Additional Language Programs  
to Support Immigrant Integration in Manitoba Workplaces"

**Settlement and Labour Market Services Branch,  
Manitoba Labour and Immigration**

"Innovative Settlement Programs to Support Immigrant  
Integration in Manitoba Workplaces"

**Winnipeg Adult Education Centre**

"River Osborne Off Campus Site PLAR Program"

**Manitoba Aerospace Human Resources  
Coordinating Committee**

"Workplace Integration of Newcomers (WIN) Project"









**CAPLA 2008**



**October  
2008**

---





# Winter 2008

---



# AGM 2009

---





# AGM 2009

---







# Christmas 2009

---







# Christmas 2009





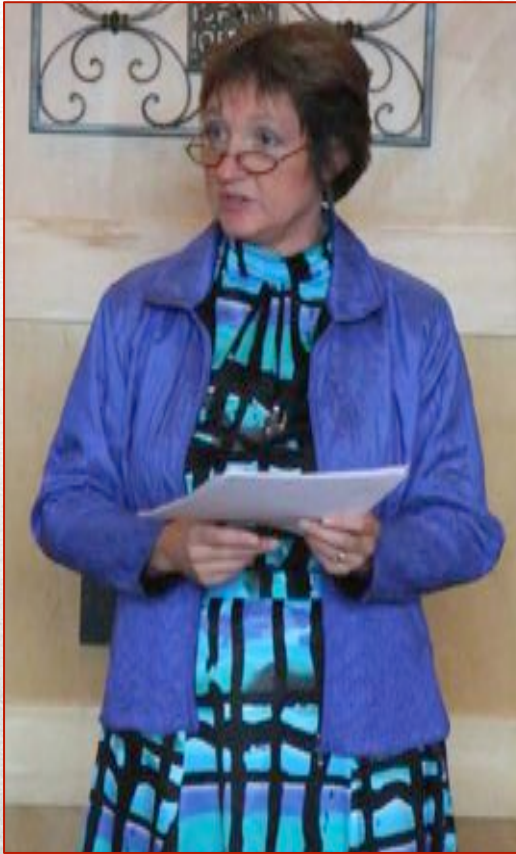
# PEARL Awards 2010





# PEARL Awards 2010

---



# Christmas 2010

---





# **Spring Into Learning 2012**

---



## **PEARL Award Winners, Symposium 2012**

---





## **PEARL Award Winners, Symposium 2012**

---





# Symposium 2013

---





# Symposium 2013

---





# PEARL Award Winners, Symposium 2013

---



# Danish Study Tour 2013





Ann Pedersen, Kerri Caldwell Korabelnikov, Mavis Lewis-Webber, Hannah Gifford, Stephanie Rozzi, Jeff Wheeldon (missing), Margaret Riffell, D'Arcy Phillips, Gary McNeely, Kaleigh Quinn)

# Board 2014-15

---





# Symposium 2014

---





**PEARL & ExemPLAR Award Winners, Symposium 2014**

---





## PEARL & ExemPLAR Award Winners, Symposium 2014

---





## **PEARL & ExemPLAR Award Winners, Symposium 2014**

---





# October 2014

---









**Bring Home the Learning**  
**CAPLA Conference Highlights December 2014**





**April 2015**





## Misc Photos

---





Congratulations!

---